

# CONTITHERM DUAL FUEL SMALL HEAVY OIL BURNER 626-54

## SALIENT FEATURES

- ✦ CONSIDERABLE FUEL SAVING COMPARED TO OTHER CONVENTIONAL BURNERS
- ✦ NO MOVING PARTS AND HENCE REDUCED MAINTENANCE
- ✦ EFFECTIVE OIL ATOMISATION DUE TO SEPERATE ATOMISING AIR INLET
- ✦ OIL CONTROL BY A SPECIAL MICROTROL OIL VALVE
- ✦ INTERNAL PARTS EASILY REMOVABLE FOR CLEANING
- ✦ FIRST CHOICE OF ORIGINAL EQUIPMENT MANUFACTURERS



## CONTITHERM

Series 626-54 Dual Fuel Burners, of in sizes -3, -4 and 5 make possible the use of the presently available high viscous furnace oil ( heated to a viscosity of 70 seconds Redwood I) in the range of 36 litres/ hr down to less than 7 litres / hr, with good flame characteristics within a limited range of lean (excess air) to rich (excess fuel) operation. Low pressure air (63" WG) is used as the atomising medium, providing an economical alternative for applications where steam or compressed not available air is .

parts, mounting plate and tile as the series 642 burner. A cast iron mounting plate, 9" long tile, heat resistant SS air tubes, refractory facing, special cleaning air nozzle and microtrol oil valve are furnished as standard. (Burner tile and Microtrol valve are priced seperately)

## CONTROL

The burner may be controlled either on ratio or with throttled fuel only. On multi-burner zones, where furnace atmosphere must be maintained, use a metered flow fuel / air ratio controller.

## CONTRUCTION

This sealed-in burner utilises the same body

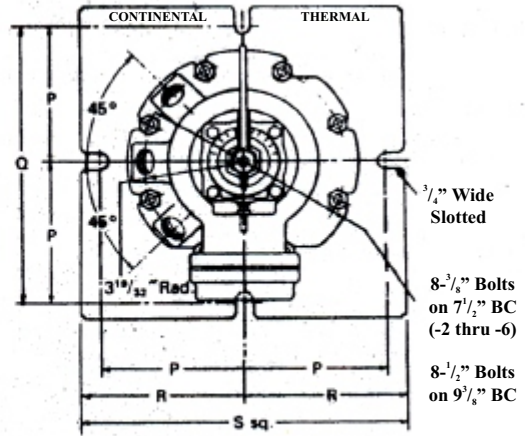
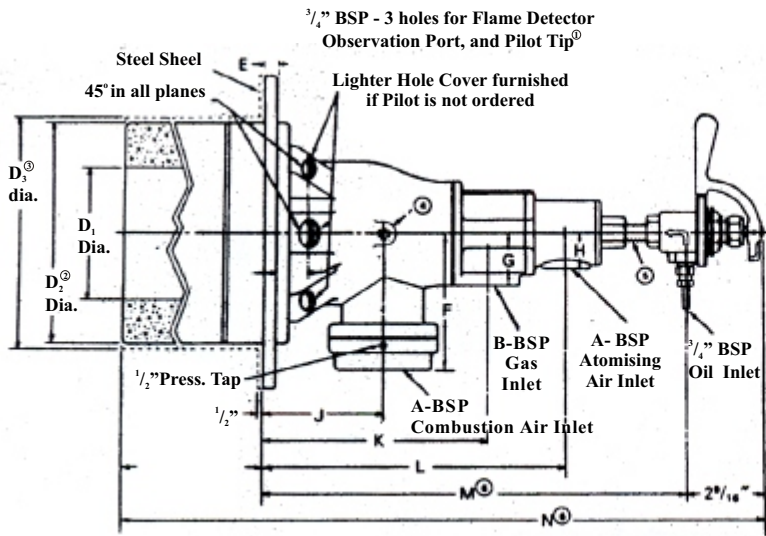
## CAPACITIES

BURNER DESIGNATION	COMBUSTION AIR IN INCHES WG				ATOMISING AIR AT 63" WG	OIL CAPACITIES IN LIT. / HR. AT 28"WG MAIN AIR PRESSURE
	2	7	1 6	2 8		
626 - 54 - 3	1130	2100	3150	4200	700	13
626 - 54 - 4	1830	3400	5100	6800	700	19
626 - 54 - 5	2500	4700	7050	9400	700	25

## FLAME CHARACTERISTICS

BURNER DESIGNATION	GAS FIRING		OIL FIRING	
	FLAME LENGTH IN INCHES	FLAME DIA IN INCHES	FLAME LENGTH IN INCHES AT 28"WG MAIN AIR	FLAME DIA IN INCHES
626 - 54 - 3	27	5 - 8	28	4 - 7
626 - 54 - 4	33	5 - 9	36	4 - 8
626 - 54 - 5	40	4 -10	40	4 -10

We reserve the right to make changes in specifications and constructional features as a result of continuous development and improvement



BSP - BRITISH STANDARD PIPE THREAD

BURNER DESIGNATION	DIMENSIONS IN INCHES																				WT IN KGS
	ALL DIMENSIONS EXCEPT MOUNTING HOLES ARE FOR ESTIMATION PURPOSE ONLY																				
	A	B	C	D	D <sub>2</sub>	D <sub>3</sub>	E	F	G	H	J	K	L	M	N	P	Q	R	S		
626-54-3	1 1/2	1	3/4	5	8 1/2	9 1/2	1/2	5 1/4	2	1 3/8	4 3/8	8 3/8	11 5/16	15 13/16	18 3/8	5 1/4	10 1/2	6	12	37	
626-54-4	2	1 1/4	3/4	5	8 1/2	9 1/2	1/2	5 1/4	2	1 3/8	4 3/8	8 3/8	11 5/16	15 13/16	18 3/8	5 1/4	10 1/2	6	12	37	
626-54-5	2 1/2	1 1/2	1	5	8 1/2	9 1/2	1/2	5 1/4	2	1 3/8	4 3/8	8 3/8	11 5/16	15 13/16	18 3/8	5 1/4	10 1/2	6	12	37	

**Note :** Turning down atomising air when firing gas greatly enhances excess air rates at low main air pressures

**RAY ENTERPRISES**

Plot No.150, 'S' Block, M.I.D.C., Bhosari, Pune - 411 026.  
 Telephone: (+91)-(20)-27129290 Mobile: (+91)- 7410077911, 9890007000  
 Email: rayenterprises@hotmail.com / Website: www.rayenterprisespune.com